

054313

RECEIVED
LARAMIE COUNTY
CHEYENNE, WY.

CERTIFIED LAND CORNER RECORDATION

'89 FEB 17 AM 10 26

DESCRIPTION OF CORNER EVIDENCE FOUND, AND ORIGINAL RECORD (If known)

S.20 S.21
S.29 S.28
T.17N., R.67W.
6th P.M.

Found no evidence of previous monumentation.

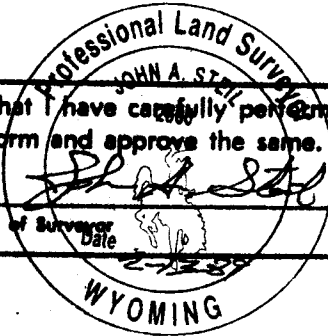
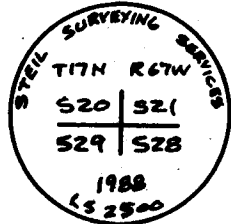
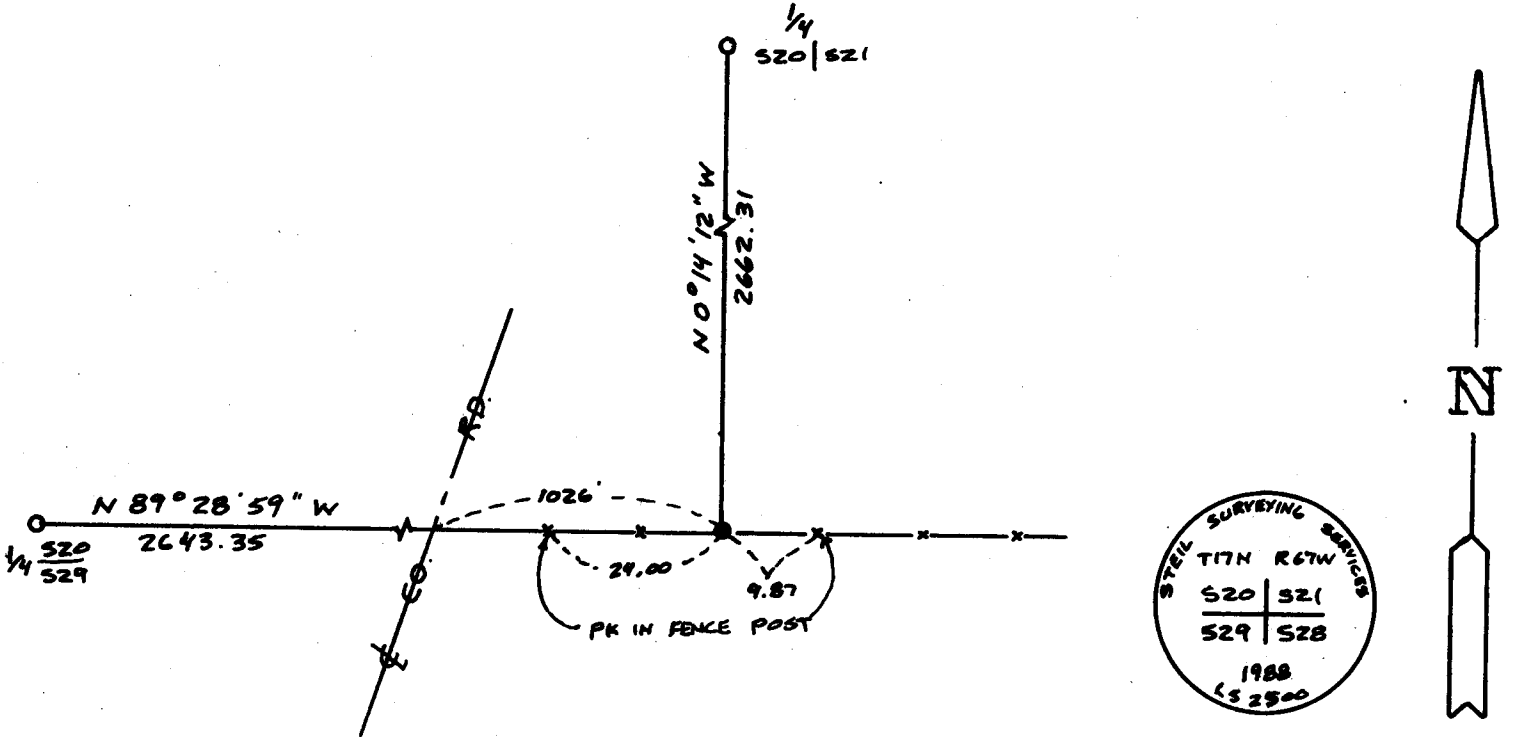
G.L.O. Record: Limestone 20"x10"x8" set by Alfred M. Rogers, October 19, 1872.

DESCRIPTION OF MONUMENT AND ACCESSORIES ESTABLISHED TO PERPETUATE THE ORIGINAL LOCATION OF THIS CORNER:

At the corner: Set 3"x30" long Aluminum Pipe with 3 1/2" Aluminum Cap stamped as shown below. Projecting 0.7' above ground encircled by collar of stone. Reset from Highway R/W Plans Project No. 175A 1930.

Accessories : See ties below.

SKETCH, WITH COURSE AND DISTANCE TO ADJACENT CORNER IF DETERMINED IN THIS SURVEY. (May Sketch or Paste Reproduction on Reverse Side.)



I, John A. Steil certify that I have carefully performed or reviewed the work done on the diagrammed corner as reported on this recordation form and approve the same.

Signature of Surveyor

L.S. 2500
Registration No.

STATE OF WYOMING,
Office of Clerk and Recorder,
County of _____

This "corner record" was filed for record on the _____ day of _____, 19____, was noted on the cross-index plat and is assigned page No. _____, in book No. _____

Joseph C. Whitcomb
County Official

Cross Index No.	R-9	T. 17N	R. 67W	Mer. 6th
_____	_____	_____	_____	Mer.
_____	_____	_____	_____	Mer.
_____	_____	_____	_____	Mer.
_____	_____	_____	_____	Mer.
_____	_____	_____	_____	Mer.
_____	_____	_____	_____	Mer.